

Presenting Wiretwin

Your Facility's Future, Today

Do these problems sound familiar?

Is managing your maintenance a headache for you?

Rising energy costs, manual maintenance processes, and inefficient systems are eating into your budget. If facility management feels expensive and time-consuming, you're not alone—many managers struggle to optimize resources while controlling costs.

Do you waste hours searching for scattered documents?

How many hours do you waste hunting for documents? Floor plans, manuals, spreadsheets... When critical data is spread across different platforms (or piles of paper), it slows down decision-making and leads to costly delays.

Struggling to act without up-to-date building data?

Without real-time monitoring, small issues can quickly turn into expensive problems. Most systems rely on outdated reports, making it hard to track energy usage, equipment health, or maintenance performance when it matters most.

Tired of jumping between too many systems?

Multiple platforms for energy, maintenance, and asset tracking only make things more complicated. Managing facilities shouldn't mean dealing with disconnected tools or endless logins.



With **Wiretwin**, we've got it covered

Wiretwin

the only facility management software you'll ever need

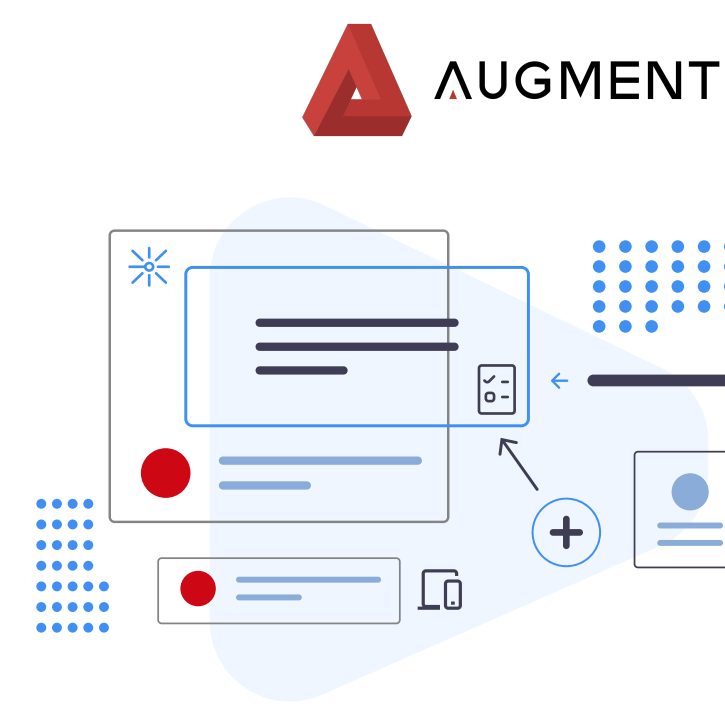
In the world of facility and asset management, **the right technology can make all the difference.**

That's where Wiretwin comes in: designed to **revolutionize the way you manage your facilities and assets**, it leverages the tools you have today to optimize your workflows, resources, and costs.

Wiretwin is a cutting-edge Facility Management platform designed to transform the way facility & asset management operates.

Using **digital twin technology** and bringing together the power of Artificial Intelligence (AI), Internet of Things (IoT), and Building Information Modeling (BIM), Wiretwin provides a comprehensive, **real-time view of your facilities**, seamlessly connecting the physical and digital world.

It gives facility & asset managers **complete control over facilities and their data** - all in BIM format.



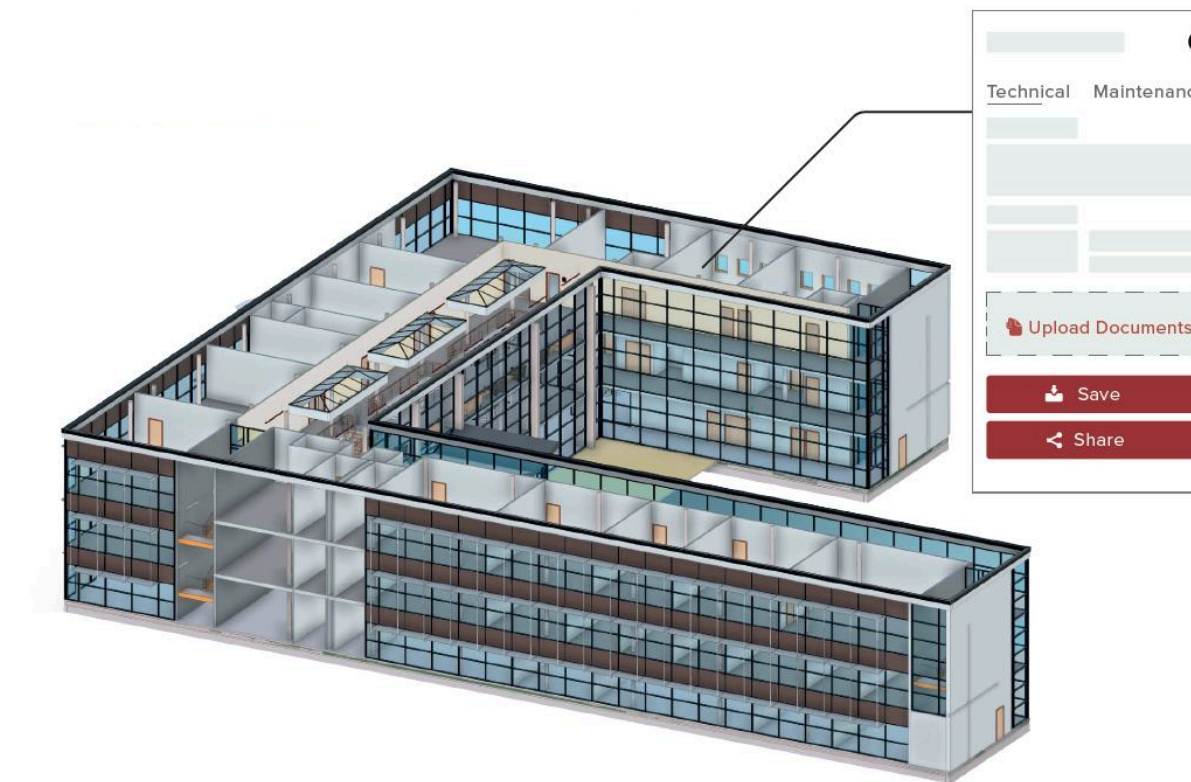
Wiretwin is complete solution that empowers you to manage your facilities and assets more efficiently or effectively by **allowing you to visualize, monitor, and control your assets in a way that was previously unimaginable:**

With our extensive selection of modules you can supercharge Wiretwin to fit your needs.

- Automate and optimize your Maintenance**
 Automated maintenance and AI-powered tools help you cut operational costs while extending equipment lifespans.
- Digitize your facilities & centralize their data**
 Say goodbye to scattered information. Wiretwin consolidates all your facility data into a single source of truth in BIM format.
- Make Smarter Decisions Through Automated Reporting**
 Wiretwin can generate reports and analytics. With those, you can spot inefficiencies, reduce downtime, and optimize building performance effortlessly.

Features & functions

Augment's Wiretwin Modules are a software suite designed to **expand the capabilities of Wiretwin.** They are modular in nature, **each designed to address a specific aspect** of facility and asset management. Each Module can be used independently or in combination with others, providing a **flexible, modular solution** that can be tailored to your specific needs.



Wiretwin Can Help Why Wiretwin?

→ Affordable Digitization

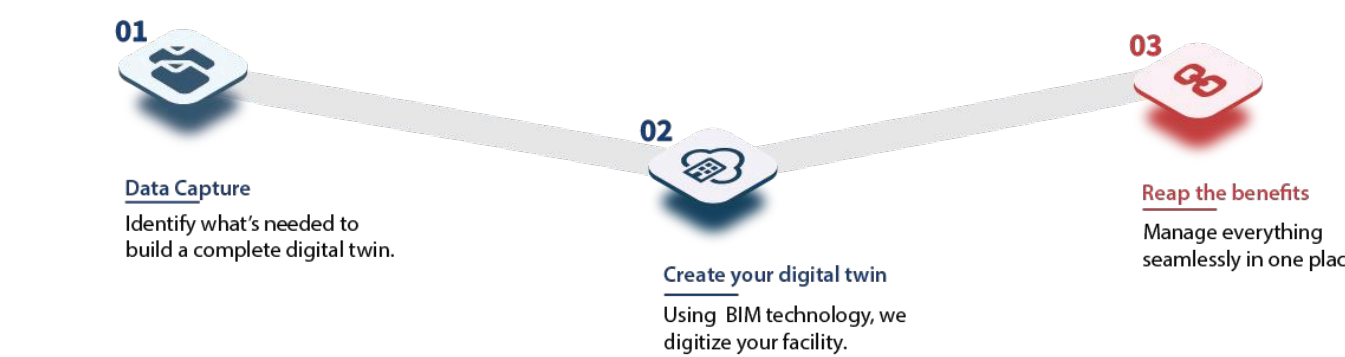
We digitize exactly what you need, making sure your digital twin matches your budget.

→ The only software you'll need

Its modular nature and ability to connect to every hardware allows Wiretwin to evolve with your requirements.

→ 1 facility = 1 subscription

Every facility benefits from 150 accesses to be distributed freely between facility managers, technicians and subcontractors.



How it works

● Capture Your Data

We'll assess your current facility data and identify what's needed to build a complete digital twin.

● Create Your Digital Twin

Using BIM technology, we digitize your facility, filling any gaps with our digitization services.

● Reap the Benefits

Choose your modules to manage everything seamlessly in one place

Make smarter, faster decisions with clear, data-driven insights. With Wiretwin, you can stop juggling tools and start taking control.

About Augment

Augment is a pioneer in digital solutions for facility and asset management. We leverage cutting-edge technology to provide data-driven insights, enhancing operational efficiency, strategic decision-making, and overall asset ROI.

Our solutions are designed with a deep understanding of the unique challenges faced by Asset and Facility Managers, offering a comprehensive, integrated approach to managing your assets.

Why us?

Your Partners in Digitization

At Augment, we specialize in designing, implementing, and refining the digitization of your facilities. As your trusted partners, we transform facilities lacking documentation, plans, or maintenance processes into fully optimized, smart facilities using digital twin technology.

Wiretwin, the only software you'll ever need

Wiretwin is a one-stop shop software for facility management, combining all operations—maintenance, cleaning, inventory, hardware monitoring, and reporting—into one centralized platform. Its modular design and real-time digital twin technology streamline processes, giving you complete control and visibility in a single, efficient solution.

BIM-Based Digital Twins

Wiretwin uses advanced BIM technology to build a detailed 3D digital twin of your facility, combining visual accuracy with rich, integrated data. This dynamic model lets you access documentation, monitor operations, and manage systems in one intuitive interface.

Contact us today

● **Contact**
info@augment.lu
www.augment.lu
 +352 28 81 61 13

● **Address**
 9, Rue du Laboratoire
 Luxembourg L-1911,
 Luxembourg

